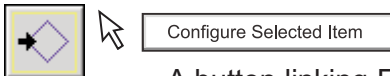
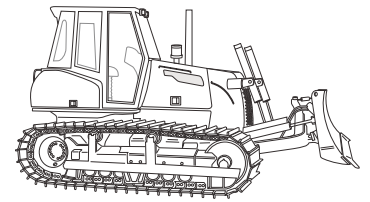


ELECTRONIC DIAGNOSTICS

Drive-Train Diagnostic Support - Summary



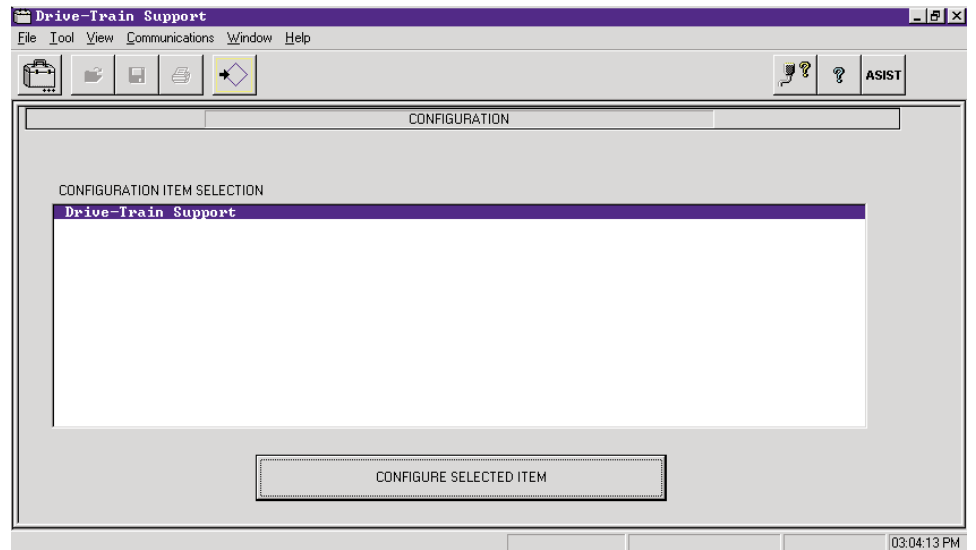
Configure Selected Item

- A button linking Electronic Diagnostics to the Drive-Train Diagnostic Support program.



ASIST

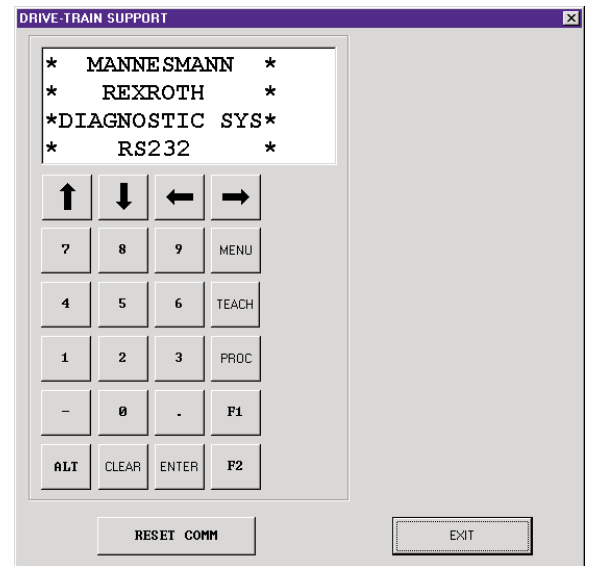
- Display ASIST model data base information.



Drive-Train Diagnostic Support



Electronic Diagnostics provides a link to the crawler vehicle systems.

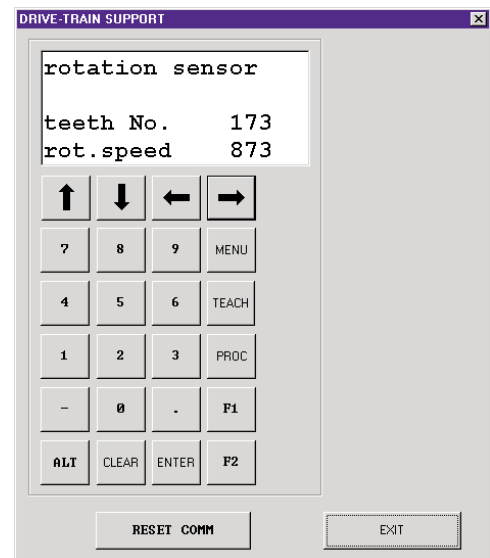
- Parameter View Screens - Used to monitor transmission parameters and specifications.
- Parameter Change Screens - Used to adjust transmission performance parameters in controller memory.



Parameter View Screens

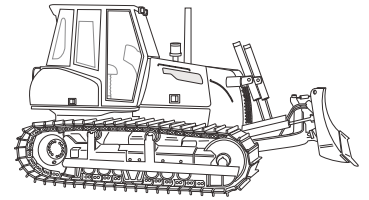
Parameter View screens open as the Drive-Train Diagnostic Support program opens.

- Monitor the following machine functions:
 - Operator Input Signals
 - Safety Input Signals
 - Safety Switch Information
 - Solenoid Current Values
 - Controller Errors
 - Transmission Rotation Sensor
 - Gear Control
- Left click the Left  or Right  Arrows to navigate/view a different screen (function) within the Parameter View Screens.






ELECTRONIC DIAGNOSTICS

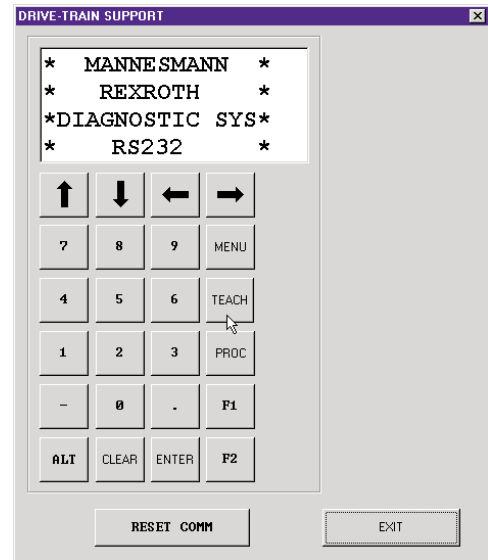
Drive-Train Diagnostic Support - Summary





TEACH

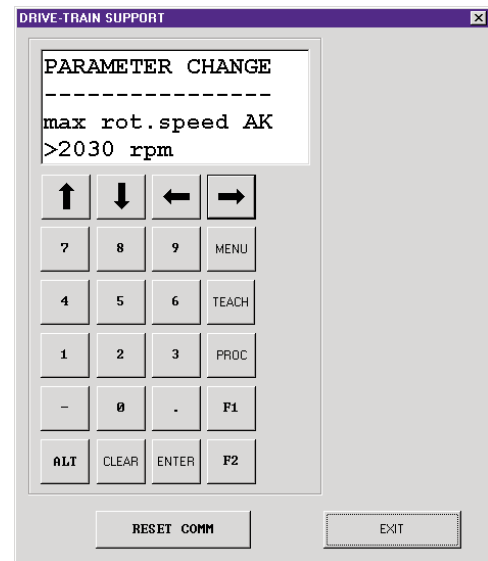
Parameter Change Screens

- Left click the Teach  button to open/view the Parameter Change Screens
- Left click the Left  or Right  Arrows to navigate/view a different screen (function) within the Parameter Change Screens.




Changing Parameter Values

- Left click the Up  or Down  Arrows to change parameter values on the Parameter Change Screens.



PROC

Saving Parameter Changes

- Left click the Proc  button to save the change in the parameter value on the Parameter Change Screens.

